



RAKtherm[®]
Ultimate Piping Solutions

50 years Guarantee



INNOVATION
TECHNOLOGY

ULTIMATE PIPING
SOLUTIONS

FROM WORLDWIDE TO
RAK THERM



Mr. Ali Hashim
Tahweel Industrial Group
President

Tahweel Industrial Group
President

Welcome to

RAKtherm[®]
Ultimate Piping Solutions

Gulf Plastic and Converting Industries (Tahweel™), is a multifaceted manufacturing company based in the United Arab Emirates, supplying various engineering systems for the construction sector.

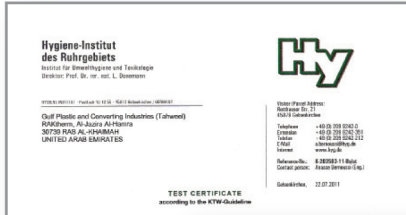
With over 50 years of experience in plastic pipe and fitting manufacturing in Saudi Arabia, Egypt and UAE, Tahweel™ has launched its first integrated PP-R and PE-X pipes & fittings system for servicing a booming construction sector worldwide and in the Middle East in particular under the trade name of **RAKtherm**[®] with 40,000 m² manufacturing complex based in Ras Al Khaimah and sales branch office based in Sharjah, Tahweel™ is well on its way to become the regional leader in water supply and drainage systems.

RAKtherm is a versatile, and comprehensive system for delivery of water and other fluids, used in applications of pressurized hot and cold water delivery as well as under floor heating in all modern residential, commercial, and industrial buildings. **RAKtherm**[®] offers the widest range of PP-R and its complimentary PE-X piping systems in the Middle East and North Africa, including Multilayer oxygen barrier pipes and Aluminium composite pipes in addition to the conventional piping systems.

We believe the quality of products and the support services provided at **RAKtherm**[®] are our main advantages. This is translated in a very wide range of products that are produced with state-of-the-art machinery from the most reputed sources, and a very high-tech quality control system which ensures that this quality is always maintained in addition to well trained and highly motivated staff on all levels of the company that are always committed to premium service at any time.

Ali Hashim

CERTIFICATION



Produkt: **pipes made**
Test specimen: **pipe sample**

The test specimen meets the requirements according to the following applications and temperature:

- Applications:**
- Pipes with DN < 110 mm (domestic distribution)
 - Pipes of diameter 50 mm < DN < 300 mm (type)
 - Pipes of diameter DN > 300 mm (pressure pipes)
 - Fittings for pipes with DN < 80 mm
 - Fittings for pipes with DN < 200 mm
 - Fittings for pipes with DN < 80 mm
 - Sealing for pipes with DN < 80 mm
 - Sealing for pipes with DN < 200 mm
 - Sealing for pipes with DN < 300 mm
 - Tests in the domestic installations including hot water
 - Tests in other areas in domestic installations include

as far as technically justified.

It is not intended for use in hot water supply systems or in hot water distribution systems.

This test certificate is valid according to the test methods. After this time it can be renewed for the benefit of the Hygiene-Institut.

Dr. rer. nat. L. Beermann
Head of the Dept. for water hygiene/technical testing

The applicant has been in the possession of the test results for the material for a period of three months after the test results have been issued. The test results are valid for a period of three months after the test results have been issued. The test results are valid for a period of three months after the test results have been issued.



DVGW-Baumusterprüfzertifikat DVGW type examination certificate



DWG-431780309
Registrierungsnummer
Antragstellernummer

Anwendungsbereich field of application	Produkte der Wasserversorgung (product of water supply)
Zertifizierbarer Name der Vorstufe name of the candidate	Gulf Plastic and Converting Industries LAI-30739 Ras-Al-Khaima
Verleiher issuer	Gulf Plastic and Converting Industries LAI-30739 Ras-Al-Khaima
Produktart product category	Kunststoffrohre für die Trinkwasserinstallation: PP-R, PN 20 (8317)
Produktbezeichnung product description	Kunststoffrohr aus PP-R 80 für die Trinkwasserinstallation
Modell model	RAKtherm
Prüfberichte test reports	Mechanische Prüfung: 71365/08-1 vom 13.07.2007 (SKZ) KTV-Prüfung: C-142479-08-Silber vom 22.08.2008 (WHY) KTV-Prüfung: C-144768-07-Silber vom 07.08.2007 (WHY) Mikrobiologische Prüfung: W-145814-05-Sil vom 11.12.2006 (WHY)
Prüfungsdaten date of type examination	DVGW W 944 (01.05.2007) LMA (01.07.2008) DVGW W 270 (01.11.1999)
Ablaufdaten / AZ date of expiry / file no.	13.07.2012 / 08-0682-WNE

Dr. rer. nat. L. Beermann
Head of the Dept. for water hygiene/technical testing

The applicant has been in the possession of the test results for the material for a period of three months after the test results have been issued. The test results are valid for a period of three months after the test results have been issued. The test results are valid for a period of three months after the test results have been issued.

DVGW (DPT GmbH) ist eine der Deutschen Wasserleitungs-Technik (DWT) GmbH, die 100% in Deutschland angeschlossen ist. DVGW ist ein eingetragenes Unternehmen.



DVGW 12/211 (04/01)
2008 Weiterentwicklung 1-3
30103 Bonn
Telefon +49 228 97 68 880



Hygiene-Prüfungsbereich
Rufnummern: 0231 2511-1100, 0231 2511-1101
Telefon: +49 (0) 231 2511-1100
E-Mail: info@hygiene.de
Webseite: www.hy.de

ZERTIFIKAT SKZ

Certificate

SKZ - TeCoSA GmbH awards the following company
GULF PLASTIC & CONVERTING INDUSTRIES
RAKtherm
Al-Jazira Al-Hamra
30739 Ras Al-Khaima
United Arab Emirates

the right to use the SKZ - testing and inspection mark



A 451

for the following plastic products

Pressure pipes made of polypropylene PP-R

Users of the SKZ - mark are obliged to observe the required regulations for the production and testing of these products.

Date of expiry: 10 December 2012



Würzburg, 11 December 2007

Certification body

used in the area of
Regeln (technical)

Raktherm PP Typ 3
use of drinking water

valid on 12.12.2011
conditions the validity



RAKtherm

Product Range



PIPES



RAKtherm Pipe SDR 11 PP-R PN 10 Pipe Series 4 According To DIN 8077/78

		Packing Unit	Outer Diameter (OD)mm	Wall Thickness (S)	Intrnal Diameter (ID)mm		
P10-20	20 mm	100 mts	20	1.9	16.2	0.206	0.107
		100 mts	25	2.3	20.4		
P10-32	32 mm	40 mts	32	2.9	26.2	0.531	0.261
		40 mts	40	3.7	32.6		
P10-50	50 mm	20 mts	50	4.6	40.8	1.307	0.638
		20 mts	63	5.8	51.4		
P10-75	75 mm	20 mts	75	6.8	61.4	2.941	1.410
		12 mts	90	8.2	73.6		
P10-110	110 mm	8 mts	110	10	90	6.362	3.010

RAKtherm Pipe SDR 7.4 PP-R PN 16 Pipe Series 5 According To DIN 8077/78

		Packing Unit	Outer Diameter (OD)mm	Wall Thickness (S)	Intrnal Diameter (ID)mm		
P16-20	20 mm	100 mts	20	2.8	14.4	0.163	0.148
		100 mts	25	3.5	18		
P16-32	32 mm	40 mts	32	4.4	23.2	0.415	0.370
		40 mts	40	5.5	29		
P16-50	50 mm	20 mts	50	6.9	36.2	1.029	0.896
		20 mts	63	8.6	45.8		
P16-75	75 mm	20 mts	75	10.3	54.4	2.307	2.010
		12 mts	90	12.3	65.4		
P16-110	110 mm	8 mts	110	15.1	79.8	5.674	4.300



RAKtherm Pipe SDR 6 PP-R PN 20 Pipe Series 6 According To DIN 8077/78

Art.-No.	Dimension	Packing Unit	Outer Diameter (OD)mm	Wall Thickness (S)	Internal Diameter (ID)mm	Water content l/mt	Kg / mt
P20-20	20 mm	100 mts	20	3.4	13.2	0.137	0.172
P20-25	25 mm	100 mts	25	4.2	16.6	0.216	0.266
P20-32	32 mm	40 mts	32	5.4	21.2	0.353	0.434
P20-40	40 mm	40 mts	40	6.7	26.6	0.556	0.671
P20-50	50 mm	20 mts	50	8.3	33.4	0.866	1.040
P20-63	63 mm	20 mts	63	10.5	42	1.385	1.650
P20-75	75 mm	20 mts	75	12.5	50	1.963	2.340
P20-90	90 mm	12 mts	90	15	60	2.827	3.360
P20-110	110 mm	8 mts	110	18.3	73.4	4.208	5.010

RAKtherm Pipe SDR 5 PP-R PN 25 Pipe Series 2 According To DIN 8077/78

Art.-No.	Dimension	Packing Unit	Outer Diameter (OD)mm	Wall Thickness (S)	Internal Diameter (ID)mm	Water content l/mt	Kg / mt
P25-20	20 mm	100 mts	20	4.1	11.8	0.111	0.198
P25-25	25 mm	100 mts	25	5.1	14.8	0.178	0.307
P25-32	32 mm	40 mts	32	6.5	19	0.291	0.498
P25-40	40 mm	40 mts	40	8.1	23.8	0.461	0.775
P25-50	50 mm	20 mts	50	10.1	29.8	0.703	1.210
P25-63	63 mm	20 mts	63	12.7	37.6	1.137	1.910
P25-75	75 mm	20 mts	75	15.1	44.8	1.619	2.700
P25-90	90 mm	12 mts	90	18.1	53.8	2.336	3.880
P25-110	110 mm	8 mts	110	22.1	65.8	2.742	5.780

**RAKtherm Stabi Composite Pipe RR-R PN 20 With Aluminium Thicknes 0.2 mm
According To DIN 8077/78**

Art.-No.	Dimension	Packing Unit	Outer Diameter (OD)mm	Wall Thickness (S)	Intrnal Diameter (ID)mm	Water content l/mt	Kg / mt
PS20-20	20 mm	100 mts	20	2.8	14.4	0.163	0.220
PS20-25	25 mm	100 mts	25	3.5	18	0.254	0.320
PS20-32	32 mm	40 mts	32	4.4	23.2	0.415	0.470
PS20-40	40 mm	40 mts	40	5.5	29	0.651	0.720
PS20-50	50 mm	20 mts	50	6.9	36.2	1.029	1.060
PS20-63	63 mm	20 mts	63	8.6	45.8	1.633	1.650
PS20-75	75 mm	20 mts	75	10.3	54.4	2.307	2.280
PS20-90	90 mm	12 mts	90	12.3	65.4	3.318	3.200
PS20-110	110 mm	8 mts	110	15.1	79.8	5.674	4.600

RAKtherm Pipe SDR 6 PP-R PN 20 Pipe Series 6 According To DIN 8077/78

Art.-No.	Dimension	Packing Unit	Outer Diameter (OD)mm	Wall Thickness (S)	Intrnal Diameter (ID)mm	Water content l/mt	Kg / mt
P20-20	20 mm	100 mts	20	3.4	13.2	0.137	0.172
P20-25	25 mm	100 mts	25	4.2	16.6	0.216	0.266
P20-32	32 mm	40 mts	32	5.4	21.2	0.353	0.434
P20-40	40 mm	40 mts	40	6.7	26.6	0.556	0.671
P20-50	50 mm	20 mts	50	8.3	33.4	0.866	1.040
P20-63	63 mm	20 mts	63	10.5	42	1.385	1.650
P20-75	75 mm	20 mts	75	12.5	50	1.963	2.340
P20-90	90 mm	12 mts	90	15	60	2.827	3.360
P20-110	110 mm	8 mts	110	18.3	73.4	4.208	5.010





**RAKtherm Stabi Composite Pipe RR-R PN 20 With Aluminium Thicknes 0.2 mm
According To DIN 8077/78 Special technology with black layer (UV resistant)
for out door and external installations under sunlight**

Art.-No.	Dimension	Packing Unit	Outer Diameter (OD)mm	Wall Thickness (S)	Intrnal Diameter (ID)mm	Water content l/mt	Kg / mt
PSUV20-20	20 mm	100 mts	20	2.8	14.4	0.163	0.220
PSUV20-25	25 mm	100 mts	25	3.5	18	0.254	0.320
PSUV20-32	32 mm	40 mts	32	4.4	23.2	0.415	0.470
PSUV20-40	40 mm	40 mts	40	5.5	29	0.651	0.720
PSUV20-50	50 mm	20 mts	50	6.9	36.2	1.029	1.060
PSUV20-63	63 mm	20 mts	63	8.6	45.8	1.633	1.650
PSUV20-75	75 mm	20 mts	75	10.3	54.4	2.307	2.280
PSUV20-90	90 mm	12 mts	90	12.3	65.4	3.318	3.200
PSUV20-110	110 mm	8 mts	110	15.1	79.8	5.674	4.600

**RAKtherm Stabi Composite Pipe RR-R PN 25 With Aluminium Thicknes 0.2 mm
According To DIN 8077/78 Special technology with black layer (UV resistant)
for out door and external installations under sunlight**

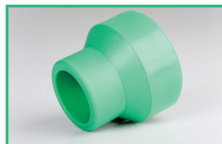
Art.-No.	Dimension	Packing Unit	Outer Diameter (OD)mm	Wall Thickness (S)	Intrnal Diameter (ID)mm	Water content l/mt	Kg / mt
PSUV25-20	20 mm	100 mts	20	3.4	13.2	0.137	0.241
PSUV25-25	25 mm	100 mts	25	4.2	16.6	0.216	0.350
PSUV25-32	32 mm	40 mts	32	5.4	21.2	0.353	0.542
PSUV25-40	40 mm	40 mts	40	6.7	26.6	0.556	0.805
PSUV25-50	50 mm	20 mts	50	8.3	33.4	0.866	1.217
PSUV25-63	63 mm	20 mts	63	10.5	42	1.385	1.860
PSUV25-75	75 mm	20 mts	75	12.5	50	1.963	2.586
PSUV25-90	90 mm	12 mts	90	15	60	2.827	3.656
PSUV25-110	110 mm	8 mts	110	18.3	73.4	4.208	5.372

Product Range



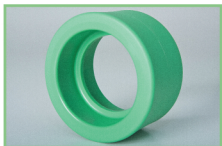
Reducer Socket

Art.-N	Dimension	Packing Unit	Kg / Piece
R1-25	25/20 mm	10 pcs	0.012
R1-32	32/20 mm	5 pcs	0.015
R1-32	32/25 mm	5 pcs	0.020
R1-40	40/20 mm	5 pcs	0.025
R1-40	40/25 mm	5 pcs	0.029
R1-40	40/32 mm	5 pcs	0.034
R1-50	50/20 mm	5 pcs	0.044
R1-50	50/25 mm	5 pcs	0.045
R1-50	50/32 mm	5 pcs	0.050
R1-50	50/40 mm	5 pcs	0.056
R1-63	63/20 mm	1 pc	0.071
R1-63	63/25 mm	1 pc	0.073



Socket

Art.-N	Dimension	Packing Unit	Kg / Piece
S1-25	20 mm	10 pcs	0.010
S1-32	25 mm	10 pcs	0.015
S1-40	32 mm	5 pcs	0.025
S1-50	40 mm	5 pcs	0.042
S1-63	50 mm	5 pcs	0.081
S1-75	63 mm	1 pc	0.141
S1-90	75 mm	1 pc	0.200
S1-110	90 mm	1 pc	0.318
	110 mm	1 pc	0.563



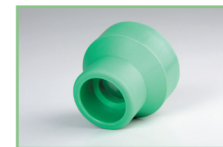
End Plug

Dimension	Packing Unit	Kg / Piece
	10 pcs	0.026
	10 pcs	0.029
	50 pcs	0.017



Reducer Socket

Art.-No.	Dimension	Packing Unit	Kg / Piece
R1-6332	63/32 mm	1 pc	0.091
R1-6340	63/40 mm	1 pc	0.092
R1-6350	63/50 mm	1 pc	0.105
R1-7540	75/40 mm	1 pc	0.130
R1-7550	75/50 mm	1 pc	0.135
R1-7563	75/63 mm	1 pc	0.158
R1-9050	90/50 mm	1 pc	0.196
R1-9063	90/63 mm	1 pc	0.220
R1-9075	90/75 mm	1 pc	0.265
R1-11063	110/63 mm	1 pc	0.350
R1-11075	110/75 mm	1 pc	0.390
R1-11090	110/90 mm	1 pc	0.468



Elbow 90°

Art.-No.	Dimension	Packing Unit	Kg / Piece
E1-20	20 mm	10 pcs	0.016
E1-25	25 mm	10 pcs	0.024
E1-32	32 mm	5 pcs	0.039
E1-40	40 mm	5 pcs	0.072
E1-50	50 mm	5 pcs	0.162
E1-63	63 mm	1 pc	0.262
E1-75	75 mm	1 pc	0.454
E1-90	90 mm	1 pc	0.727
E1-110	110 mm	1 pc	1.200



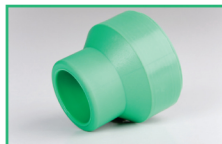
Over Bridge Bow

Art.-No.	Dimension	Packing Unit	Kg / Piece
B-20	20 mm	10 pcs	0.063
B-25	25 mm	10 pcs	0.098
B-32	32 mm	5 pcs	0.165



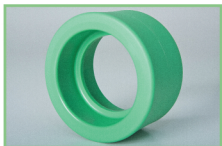
Reducer Socket

Art.-N	Dimension	Packing Unit	Kg / Piece
R1-25	25/20 mm	10 pcs	0.012
R1-32	32/20 mm	5 pcs	0.015
R1-32	32/25 mm	5 pcs	0.020
R1-40	40/20 mm	5 pcs	0.025
R1-40	40/25 mm	5 pcs	0.029
R1-40	40/32 mm	5 pcs	0.034
R1-50	50/20 mm	5 pcs	0.044
R1-50	50/25 mm	5 pcs	0.045
R1-50	50/32 mm	5 pcs	0.050
R1-50	50/40 mm	5 pcs	0.056
R1-63	63/20 mm	1 pc	0.071
R1-63	63/25 mm	1 pc	0.073



Socket

Art.-N	Dimension	Packing Unit	Kg / Piece
S1-25	20 mm	10 pcs	0.010
S1-32	25 mm	10 pcs	0.015
S1-40	32 mm	5 pcs	0.025
S1-50	40 mm	5 pcs	0.042
S1-63	50 mm	5 pcs	0.081
S1-75	63 mm	1 pc	0.141
S1-90	75 mm	1 pc	0.200
S1-110	90 mm	1 pc	0.318
	110 mm	1 pc	0.563



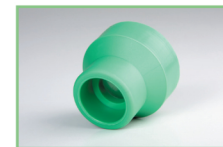
End Plug

Dimension	Packing Unit	Kg / Piece
	10 pcs	0.026
	10 pcs	0.029
	50 pcs	0.017



Reducer Socket

Art.-No.	Dimension	Packing Unit	Kg / Piece
R1-6332	63/32 mm	1 pc	0.091
R1-6340	63/40 mm	1 pc	0.092
R1-6350	63/50 mm	1 pc	0.105
R1-7540	75/40 mm	1 pc	0.130
R1-7550	75/50 mm	1 pc	0.135
R1-7563	75/63 mm	1 pc	0.158
R1-9050	90/50 mm	1 pc	0.196
R1-9063	90/63 mm	1 pc	0.220
R1-9075	90/75 mm	1 pc	0.265
R1-11063	110/63 mm	1 pc	0.350
R1-11075	110/75 mm	1 pc	0.390
R1-11090	110/90 mm	1 pc	0.468



Elbow 90°

Art.-No.	Dimension	Packing Unit	Kg / Piece
E1-20	20 mm	10 pcs	0.016
E1-25	25 mm	10 pcs	0.024
E1-32	32 mm	5 pcs	0.039
E1-40	40 mm	5 pcs	0.072
E1-50	50 mm	5 pcs	0.162
E1-63	63 mm	1 pc	0.262
E1-75	75 mm	1 pc	0.454
E1-90	90 mm	1 pc	0.727
E1-110	110 mm	1 pc	1.200



Over Bridge Bow

Art.-No.	Dimension	Packing Unit	Kg / Piece
B-20	20 mm	10 pcs	0.063
B-25	25 mm	10 pcs	0.098
B-32	32 mm	5 pcs	0.165



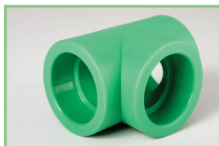
Elbow 45

Art.-No.	Dimension	Packing Unit	Kg / Piece
E3-20	20 mm	10 pcs	0.014
E3-25	25 mm	10 pcs	0.019
E3-32	32 mm	5 pcs	0.032
E3-40	40 mm	5 pcs	0.053
E3-50	50 mm	5 pcs	0.120
E3-63	63 mm	1 pc	0.208
E3-75	75 mm	1 pc	0.316
E3-90	90 mm	1 pc	0.516
E3-110	110 mm	1 pc	0.990



Equal Tee

Art.-No.	Dimension	Packing Unit	Kg / Piece
T1-20	20 mm	10 pcs	0.021
T1-25	25 mm	10 pcs	0.031
T1-32	32 mm	5 pcs	0.051
T1-40	40 mm	5 pcs	0.090
T1-50	50 mm	5 pcs	0.200
T1-63	63 mm	1 pc	0.348
T1-75	75 mm	1 pc	0.523
T1-90	90 mm	1 pc	0.850



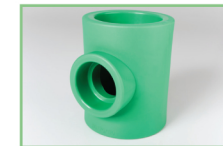
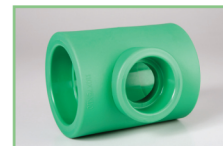
Flanges Adaptor

Art.-No.	Dimension	Packing Unit	Kg / Piece
	75 mm (ppr socket)	1 pc	0.084
P-FS-75	75 mm (steel flang)	1 pc	1.855
P-FG-75	75 mm (gasket)	1 pc	0.048
	90 mm (ppr socket)	1 pc	0.135
P-FS-90	90 mm (steel flang)	1 pc	1.565
P-FG-90	90 mm (gasket)	1 pc	0.074
	110 mm (ppr socket)	1 pc	0.201
P-FS-110	110 mm (steel flang)	1 pc	1.920
P-FG-110	110 mm (gasket)	1 pc	0.106



Reducing Tee

Art.-No.	Dimension	Packing Unit	Kg / Piece
T2-202520	20 x 25 x 20 mm	10 pcs	0.039
T2-252020	25 x 20 x 20 mm	10 pcs	0.036
T2-252025	25 x 20 x 25 mm	10 pcs	0.034
T2-253225	25 x 32 x 25 mm	5 pcs	0.066
T2-322032	32 x 20 x 32 mm	5 pcs	0.048
T2-322525	32 x 25 x 25 mm	5 pcs	0.063
T2-323225	32 x 32 x 25 mm	5 pcs	0.056
T2-322532	32 x 25 x 32 mm	5 pcs	0.058
T2-402040	40 x 20 x 40 mm	5 pcs	0.088
T2-402540	40 x 25 x 40 mm	5 pcs	0.083
T2-403240	40 x 32 x 40 mm	5 pcs	0.099
T2-502050	50 x 20 x 50 mm	5 pcs	0.184
T2-502550	50 x 25 x 50 mm	5 pcs	0.190
T2-503250	50 x 32 x 50 mm	5 pcs	0.185
T2-504050	50 x 40 x 50 mm	5 pcs	0.222
T2-632063	63 x 20 x 63 mm	1 pc	0.324
T2-632563	63 x 25 x 63 mm	1 pc	0.322
T2-633263	63 x 32 x 63 mm	1 pc	0.331
T2-634063	63 x 40 x 63 mm	1 pc	0.322
T2-635063	63 x 50 x 63 mm	1 pc	0.379
T2-753275	75 x 32 x 75 mm	1 pc	0.498
T2-754075	75 x 40 x 75 mm	1 pc	0.502
T2-755075	75 x 50 x 75 mm	1 pc	0.531
T2-756375	75 x 63 x 75 mm	1 pc	0.497
T2-904090	90 x 40 x 90 mm	1 pc	0.812
T2-905090	90 x 50 x 90 mm	1 pc	0.809
T2-906390	90 x 63 x 90 mm	1 pc	0.812
T2-907590	90 x 75 x 90 mm	1 pc	0.920
T2-11050110	110 x 50 x 110 mm	1 pc	1.360
T2-11063110	110 x 63 x 110 mm	1 pc	1.360
T2-11075110	110 x 75 x 110 mm	1 pc	1.380
T2-11090110	110 x 90 x 110 mm	1 pc	1.420



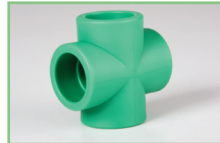
End Cap

Art.-No.	Dimension	Packing Unit	Kg / Piece
C-20	20 mm	10 pcs	0.009
C-25	25 mm	10 pcs	0.011
C-32	32 mm	5 pcs	0.019
C-40	40 mm	5 pcs	0.037
C-50	50 mm	5 pcs	0.066
C-63	63 mm	1 pc	0.131
C-75	75 mm	1 pc	0.180
C-90	90 mm	1 pc	0.281
C-110	110 mm	1 pc	0.576



Cross Tee

Art.-No.	Dimension	Packing Unit	Kg / Piece
X-20	20 mm	10 pcs	0.024
X-25	25 mm	10 pcs	0.035
X-32	32 mm	5 pcs	0.059



Female Union both ends welding

Art.-No.	Dimension	Packing Unit	Kg / Piece
UF2-20	20 mm	10 pcs	0.052
UF2-25	25 mm	10 pcs	0.061
UF2-32	32 mm	5 pcs	0.126



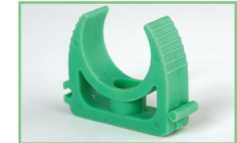
Saddle Socket

Art.-No.	Dimension	Packing Unit	Kg / Piece
SDS1-6320	63 x 20 mm	5 pcs	0.031
SDS1-6325	63 x 25 mm	5 pcs	0.032
SDS1-6332	63 x 32 mm	5 pcs	0.038
SDS1-7520	75 x 20 mm	5 pcs	0.034
SDS1-7525	75 x 25 mm	5 pcs	0.041
SDS1-7532	75 x 32 mm	5 pcs	0.038
SDS1-9020	90 x 20 mm	5 pcs	0.035
SDS1-9025	90 x 25 mm	5 pcs	0.036
SDS1-9032	90 x 32 mm	5 pcs	0.042
SDS1-11020	110 x 20 mm	5 pcs	0.035
SDS1-11025	110 x 25 mm	5 pcs	0.036
SDS1-11032	110 x 32 mm	5 pcs	0.042



Bracket For Pipe

Art.-No.	Dimension	Packing Unit	Kg / Piece
BT-20	20 mm	200 pcs	0.006
BT-25	25 mm	200 pcs	0.008
BT-32	32 mm	100 pcs	0.010
BT-40	40 mm	100 pcs	0.013

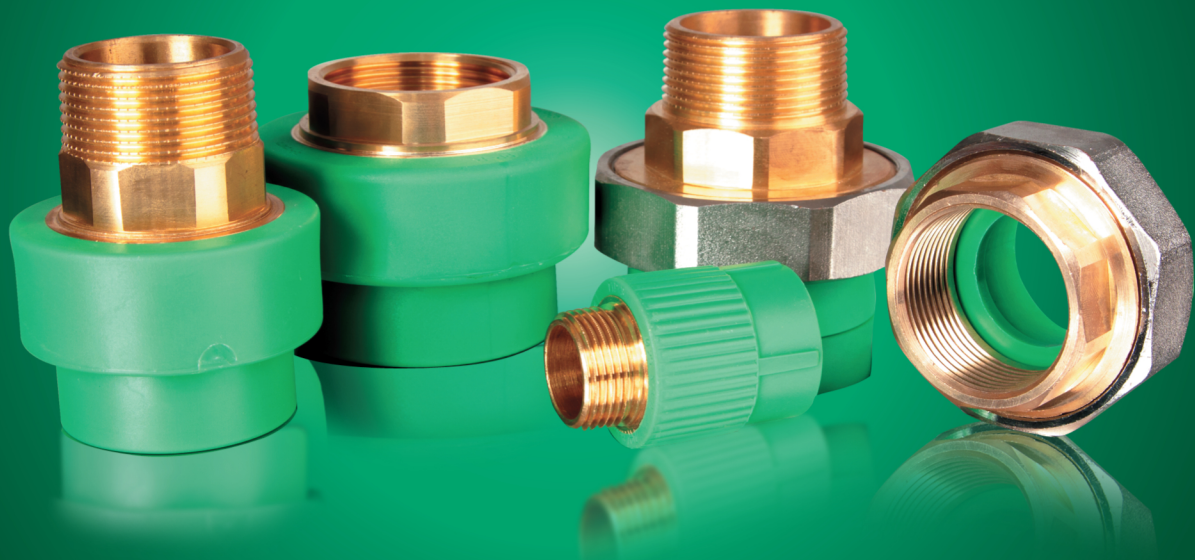


Clamp For Pipe

Art.-No.	Dimension	Packing Unit	Kg / Piece
P-CL-20	20 mm	50 pcs	0.042
P-CL-25	25 mm	50 pcs	0.053
P-CL-32	32 mm	50 pcs	0.060
P-CL-40	40 mm	50 pcs	0.067
P-CL-50	50 mm	50 pcs	0.077
P-CL-63	63 mm	25 pcs	0.082



Product Range



FITTINGS & ACCESSORIES

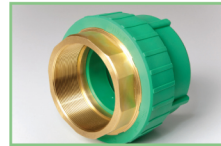
Transition Piece Round-Female

Art.-No.	Dimension	Packing Unit	Kg / Piece
AF-201/2	20 mm x 1/2"	10 pcs	0.058
AF-203/4	20 mm x 3/4"	10 pcs	0.072
AF-251/2	25 mm x 1/2"	10 pcs	0.059
AF-253/4	25 mm x 3/4"	10 pcs	0.073
AF-323/4	32 mm x 3/4"	5 pcs	0.078



Transition Piece Round-Female With Hexagon Socket

Art.-No.	Dimension	Packing Unit	Kg / Piece
AF1-321	32 mm x 1"	5 pcs	0.236
AF1-401	40 mm x 1"	5 pcs	0.240
AF1-4011/4	40 mm x 1.1/4"	5 pcs	0.367
AF1-5011/2	50 mm x 1.1/2"	1 pc	0.435
AF1-632	63 mm x 2"	1 pc	0.586
AF1-7521/2	75 mm x 2.1/2"	1 pc	1.061
AF1-903	90 mm x 3"	1 pc	1.635
AF1-1104	110 mm x 4"	1 pc	3.310



Transition Piece Round-Male

Art.-No.	Dimension	Packing Unit	Kg / Piece
AM-201/2	20 mm x 1/2"	10 pcs	0.068
AM-203/4	20 mm x 3/4"	10 pcs	0.081
AM-251/2	25 mm x 1/2"	10 pcs	0.069
AM-253/4	25 mm x 3/4"	10 pcs	0.081
AM-323/4	32 mm x 3/4"	5 pcs	0.086



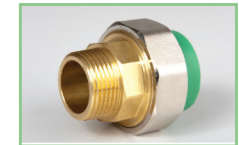
Transition Piece Round-Male With Hexagon Socket

Art.-No.	Dimension	Packing Unit	Kg / Piece
AM1-321	32 mm x 1"	5 pcs	0.227
AM1-401	40 mm x 1"	5 pcs	0.231
AM1-4011/4	40 mm x 1.1/4"	5 pcs	0.381
AM1-5011/2	50 mm x 1.1/2"	1 pc	0.430
AM1-632	63 mm x 2"	1 pc	0.688
AM1-7521/2	75 mm x 2.1/2"	1 pc	1.000
AM1-903	90 mm x 3"	1 pc	1.500
AM1-1104	110 mm x 4"	1 pc	4.890



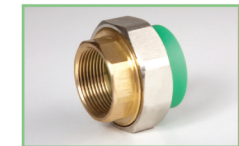
Transition PP-R Male Union

Art.-No.	Dimension	Packing Unit	Kg / Piece
TUM2-201/2	20 mm x 1/2"	10 pcs	0.121
TUM2-253/4	25 mm x 3/4"	10 pcs	0.186
TUM2-321	32 mm x 1"	5 pcs	0.264
TUM2-4011/4	40 mm x 1.1/4"	5 pcs	0.400
TUM2-5011/2	50 mm x 1.1/2"	1 pc	0.626
TUM2-632	63 mm x 2"	1 pc	1.030



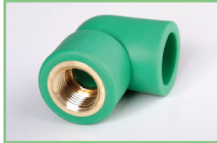
Transition PP-R Female Union

Art.-No.	Dimension	Packing Unit	Kg / Piece
TUF2-201/2	20 mm x 1/2"	10 pcs	0.108
TUF2-253/4	25 mm x 3/4"	10 pcs	0.176
TUF2-321	32 mm x 1"	5 pcs	0.212
TUF2-4011/4	40 mm x 1.1/4"	5 pcs	0.322
TUF2-5011/2	50 mm x 1.1/2"	1 pc	0.530
TUF2-632	63 mm x 2"	1 pc	0.930



Transition Elbow Female

Art.-No.	Dimension	Packing Unit	Kg / Piece
E6-201/2	20 mm x 1/2"	10 pcs	0.068
E6-203/4	20 mm x 3/4"	10 pcs	0.080
E6-251/2	25 mm x 1/2"	10 pcs	0.073
E6-253/4	25 mm x 3/4"	10 pcs	0.092
E6-321/2	32 mm x 1/2"	5 pcs	0.081
E6-323/4	32 mm x 3/4"	5 pcs	0.093
E6-321	32 mm x 1"	5 pcs	0.260



Wall Mount Elbow

Art.-No.	Dimension	Packing Unit	Kg / Piece
E5-201/2	20 mm x 1/2"	10 pcs	0.072
E5-251/2	25 mm x 1/2"	10 pcs	0.079



Transition Elbow Male

Art.-No.	Dimension	Packing Unit	Kg / Piece
E7-201/2	20 mm x 1/2"	10 pcs	0.078
E7-203/4	20 mm x 3/4"	10 pcs	0.091
E7-251/2	25 mm x 1/2"	10 pcs	0.087
E7-253/4	25 mm x 3/4"	10 pcs	0.099
E7-323/4	32 mm x 3/4"	5 pcs	0.111
E7-321	32 mm x 1"	5 pcs	0.333



Transition Female Tee

Art.-No.	Dimension	Packing Unit	Kg / Piece
T3-201/2	20 mm x 1/2"	10 pcs	0.074
T3-203/4	20 mm x 3/4"	10 pcs	0.088
T3-251/2	25 mm x 1/2"	10 pcs	0.081
T3-253/4	25 mm x 3/4"	10 pcs	0.098
T3-321/2	32 mm x 1/2"	5 pcs	0.089
T3-323/4	32 mm x 3/4"	5 pcs	0.102
T3-321	32 mm x 1"	5 pcs	0.268



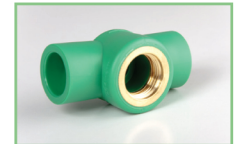
Ball Valve

Art.-No.	Dimension	Packing Unit	Kg / Piece
BV-20	20 mm	1 pc	0.350
BV-25	25 mm	1 pc	0.500
BV-32	32 mm	1 pc	0.655
BV-40	40 mm	1 pc	0.900
BV-50	50 mm	1 pc	1.313
BV-63	63 mm	1 pc	2.530



Valve Body

Art.-No.	Dimension	Packing Unit	Kg / Piece
V4-203/4	20 mm x 3/4"	1 pc	0.087
V4-253/4	25 mm x 3/4"	1 pc	0.096
V4-321	32 mm x 1"	1 pc	0.141
V4-4011/4	40 mm x 1.1/4"	1 pc	0.254



Stop Valve

Art.-No.	Dimension	Packing Unit	Kg / Piece
V1-20	20 mm x 3/4"	1 pc	0.198
V1-25	25 mm x 3/4"	1 pc	0.207
V1-32	32 mm x 1"	1 pc	0.295
V1-40	40 mm x 1.1/4"	1 pc	0.549



Bend

Art.-No.	Dimension	Packing Unit	Kg / Piece
BE-25	25 mm	10 pcs	0.044
BE-32	32 mm	5 pcs	0.075
BE-40	40 mm	5 pcs	0.125



Concealed Valve

Art.-No.	Dimension	Packing Unit	Kg / Piece
V2-20	20 mm x 3/4"	1 pc	0.410
V2-25	25 mm x 3/4"	1 pc	0.419
V2-32	32 mm x 1"	1 pc	0.433



Wall Mount Group

Art.-No.	Dimension	Packing Unit	Kg / Piece
WM-20	20 mm x 1/2"	1 set	0.220
WM-25	25 mm x 1/2"	1 set	0.283



Angel Valve

Art.-No.	Dimension	Packing Unit	Kg / Piece
P-V5-1/2	1/2" x 1/2"	1 pc	0.170



Product Range

WELDING ACCESSORIES





Pipe Cutter

Art.-No.	Dimension	Packing Unit	Kg / Piece
P-PC2-50125	50 -125 mm	1 pc	1.600



Pipe Cutter

Art.-No.	Dimension	Packing Unit	Kg / Piece
P-PC-075	0 - 75 mm	1 pc	1.670



Pipe Cutter

Art.-No.	Dimension	Packing Unit	Kg / Piece
P-PC1-042	0 - 42 mm	1 pc	0.420



Professional Pipe Cutter

Art.-No.	Dimension	Packing Unit	Kg / Piece
P-PC-042	0 - 42 mm	1 pc	0.447

Welding Tools For Saddle

Art.-No.	Dimension	Packing Unit	Kg / Piece
P-WT1-6320	63/20 mm	1 pc	0.380
P-WT1-6325	63/25 mm	1 pc	0.365
P-WT1-6332	63/32 mm	1 pc	0.335
P-WT1-7520	75/20 mm	1 pc	0.377
P-WT1-7525	75/25 mm	1 pc	0.357
P-WT1-7532	75/32 mm	1 pc	0.337
P-WT1-9020	90/20 mm	1 pc	0.382
P-WT1-9025	90/25 mm	1 pc	0.362
P-WT1-9032	90/32 mm	1 pc	0.342
P-WT1-11020	110/20 mm	1 pc	0.386
P-WT1-11025	110/25 mm	1 pc	0.366
P-WT1-11032	110/32 mm	1 pc	0.346



Welding Tools

Art.-No.	Dimension	Packing Unit	Kg / Piece
P-WT1-20	20 mm	1 pc	0.112
P-WT1-25	25 mm	1 pc	0.142
P-WT1-32	32 mm	1 pc	0.185
P-WT1-40	40 mm	1 pc	0.260
P-WT1-50	50 mm	1 pc	0.395
P-WT1-63	63 mm	1 pc	0.618
P-WT1-75	75 mm	1 pc	0.790
P-WT1-90	90 mm	1 pc	1.170
P-WT1-110	110 mm	1 pc	1.750



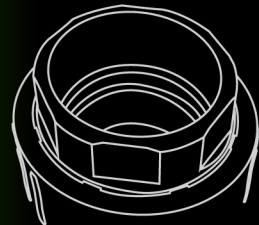
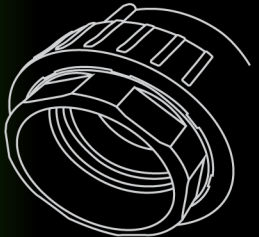
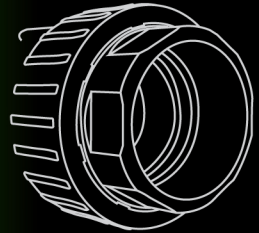
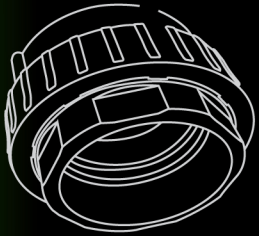
Welding Device

Art.-No.	Dimension	Packing Unit	Kg / Piece
P-WD2-2063	20 - 63 mm	1 pc	6.090
P-WD2-110	75 - 110 mm	1 pc	7.000



Peeling Tools

Art.-No.	Dimension	Packing Unit	Kg / Piece
P-WT2-2025	20 - 25 mm	1 pc	0.340
P-WT2-3240	32 - 40 mm	1 pc	0.470
P-WT2-5063	50 - 63 mm	1 pc	1.060
P-WT2-7590	75 - 90 mm	1 pc	1.160
P-WT2-110	110 mm	1 pc	1.660



With over
50 years of Experience

Have Longest life with wide range of PPR Piping System
using Latest Innovation Technology

RAKtherm[®]
Ultimate Piping Solutions

DANUBE

No.1 building material company

TOLL FREE IN UAE : 800 DANUBE (326823)

LOGISTICS AND DISTRIBUTION CENTER :

DANUBE BUILDING MATERIAL CO.

P.O. Box 18022, Jebel Ali, United Arab Emirates

Tel: +971 4 8871234 Fax: +971 4 8871235

Email: sales@aldanube.com Web: www.aldanube.com