

### Transition Piece Round-Male With Hexagon Socket

Art.-No.	Dimension	Packing Unit	Kg / Piece
AM1-321	32 mm x 1"	5 pcs	0.227
AM1-401	40 mm x 1"	5 pcs	0.231
AM1-4011/4	40 mm x 1.1/4"	5 pcs	0.381
AM1-5011/2	50 mm x 1.1/2"	1 pc	0.430
AM1-632	63 mm x 2"	1 pc	0.688
AM1-7521/2	75 mm x 2.1/2"	1 pc	1.000
AM1-903	90 mm x 3"	1 pc	1.500
AM1-1104	110 mm x 4"	1 pc	4.890



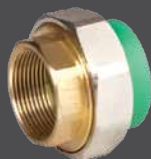
### Transition PP-R Male Union

Art.-No.	Dimension	Packing Unit	Kg / Piece
TUM2-201/2	20 mm x 1/2"	10 pcs	0.121
TUM2-253/4	25 mm x 3/4"	10 pcs	0.186
TUM2-321	32 mm x 1"	5 pcs	0.264
TUM2-4011/4	40 mm x 1.1/4"	5 pcs	0.400
TUM2-5011/2	50 mm x 1.1/2"	1 pc	0.626
TUM2-632	63 mm x 2"	1 pc	1.030



### Transition PP-R Female Union

Art.-No.	Dimension	Packing Unit	Kg / Piece
TUF2-201/2	20 mm x 1/2"	10 pcs	0.108
TUF2-253/4	25 mm x 3/4"	10 pcs	0.176
TUF2-321	32 mm x 1"	5 pcs	0.212
TUF2-4011/4	40 mm x 1.1/4"	5 pcs	0.322
TUF2-5011/2	50 mm x 1.1/2"	1 pc	0.530
TUF2-632	63 mm x 2"	1 pc	0.930



### Transition Piece Round-Female

Art.-No.	Dimension	Packing Unit	Kg / Piece
AF-201/2	20 mm x 1/2"	10 pcs	0.058
AF-203/4	20 mm x 3/4"	10 pcs	0.072
AF-251/2	25 mm x 1/2"	10 pcs	0.059
AF-253/4	25 mm x 3/4"	10 pcs	0.073
AF-323/4	32 mm x 3/4"	5 pcs	0.078



### Transition Piece Round-Female With Hexagon Socket

Art.-No.	Dimension	Packing Unit	Kg / Piece
AF1-321	32 mm x 1"	5 pcs	0.236
AF1-401	40 mm x 1"	5 pcs	0.240
AF1-4011/4	40 mm x 1.1/4"	5 pcs	0.367
AF1-5011/2	50 mm x 1.1/2"	1 pc	0.435
AF1-632	63 mm x 2"	1 pc	0.586
AF1-7521/2	75 mm x 2.1/2"	1 pc	1.061
AF1-903	90 mm x 3"	1 pc	1.635
AF1-1104	110 mm x 4"	1 pc	3.310



### Transition Piece Round-Male

Art.-No.	Dimension	Packing Unit	Kg / Piece
AM-201/2	20 mm x 1/2"	10 pcs	0.068
AM-203/4	20 mm x 3/4"	10 pcs	0.081
AM-251/2	25 mm x 1/2"	10 pcs	0.069
AM-253/4	25 mm x 3/4"	10 pcs	0.081
AM-323/4	32 mm x 3/4"	5 pcs	0.086

